

Working Instructions

- mechanical -



Xperia[™]E-Dual, C1605, C1604

Xperia[™]E, C1505, C1504

CONTENTS

1	Exterior Views.....	4
1.1	C1605, C1604.....	4
2	Tools	5
3	Disassembly.....	6
3.1	Battery Cover.....	6
3.2	Battery.....	6
3.3	Battery Lower Cover	7
3.4	Rear Cover Sub Assembly.....	7
3.5	TP LCM FPC Mylar	9
3.6	Front Cover Assembly	10
3.7	RF Cable & Main PBA	12
4	Replacement	14
4.1	Battery Cover.....	14
4.2	Battery Lower Cover	14
4.3	Rear Cover Sub Assembly.....	14
4.4	RF Cable	14
4.5	TP LCM FPC Mylar	15
4.6	Camera.....	16
4.7	Camera Holder.....	18
4.8	Conductive Tape for Camera.....	19
4.9	CU Label	20
4.10	FPC SUB PBA.....	21
4.11	Front Cover Sub Assembly	25
4.12	LCD TFT	26
4.13	Liquid Intrusion Label (on main PBA)	28
4.14	Liquid Intrusion Label (on Sub PBA).....	29
4.15	Loudspeaker & Speaker Sponge with Mesh	31
4.16	Receiver & Receiver Sponge.....	33
4.17	SIM PBA Assy & Conductive Adhesive	35
4.18	Sub PBA & Conductive adhesive Sub PBA.....	38
4.19	Touch Panel.....	42
4.20	RF Connector Sponge	45
4.21	Board Swap - Replacement	46
4.22	Board Swap – Change Label	46
4.23	Board Swap – Customize of Software	46
5	Reassembly.....	47
5.1	Main PBA & RF Cable	47
5.2	Front Cover Assembly	47
5.3	TP LCM FPC Mylar	50

5.4 Rear Cover Sub Assembly..... 51

5.5 Battery Lower Cover 53

5.6 Battery..... 54

5.7 Battery Cover..... 54

6 Revision History 55

For general information about mechanical repair related issues, refer to
1220-1333: Generic Repair Manual - mechanical

1 Exterior Views

1.1 C1605, C1604



2 Tools

SPECIAL TOOLS

1. Torque Screwdriver
2. Guitar Pick
3. Flex Film Assembly Tool
4. Bits (T5)
5. Front Opening Tool
6. Pressure Tool
7. LCD press insert



For part no's on the tools above, refer to the 'Tools Catalogue/Matrix'!

STANDARD TOOLS

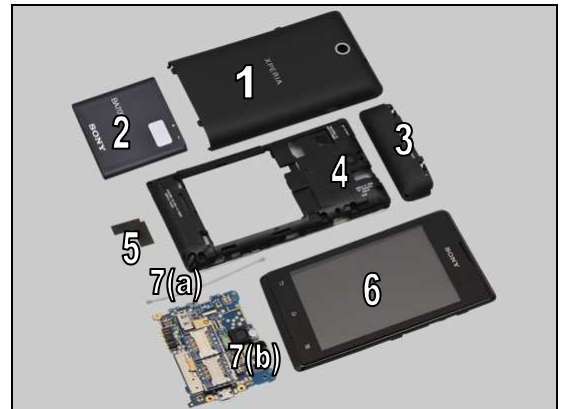
Tweezers (ESD-safe & non-metallic)



3 Disassembly

The disassembly is done in the following order:

1. Battery Cover
2. Battery
3. Battery Lower Cover
4. Rear Cover Sub Assembly
5. TP LCM FPC Mylar
6. Front cover assembly
7. RF Cable (a) & Main PBA (b)



3.1 Battery Cover

Gently push forward the Battery Cover to unlock the hooks as shown in picture.



Lift it off to remove it.



3.2 Battery

Insert a Front Opening Tool and raise the bottom of the battery to release it.



Disassembly

Remove the battery.



3.3 Battery Lower Cover

Gently pull up and remove the Battery Lower Cover as shown in picture.



3.4 Rear Cover Sub Assembly

Remove the four Screw_1.6mm_4.2mm by using a screwdriver with Bits (T5).

Scrap! Not to be reused!



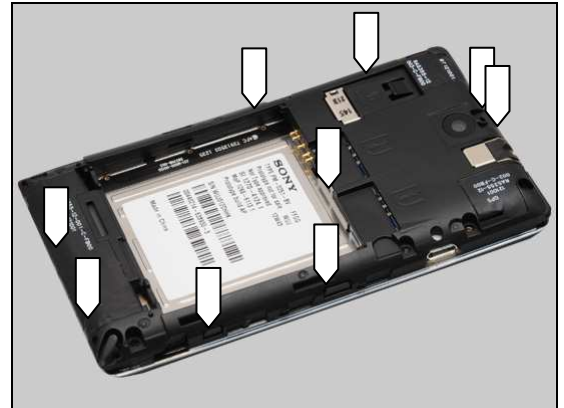
Remove the three Screw_1.4mm_2.9mm by using a screwdriver with Bits (T5).

Scrap! Not to be reused!



Disassembly

There are nine snap hooks securing the Rear Cover Sub Assembly.



Insert a Guitar Pick as shown in picture and gently slide along to release the hooks on the bottom side.



Do the same on this side.

Pay more attention and do not damage the side key switch and the camera key dome!



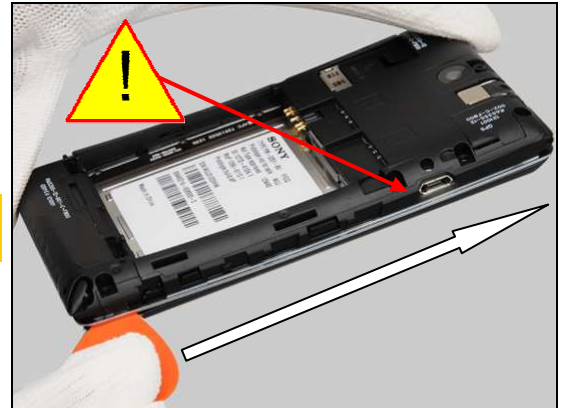
Push up to release this hook.



Disassembly

Gently slide along to release the hooks on this side.

Pay more attention and do not damage the USB connector hole!



Push up to release this hook.



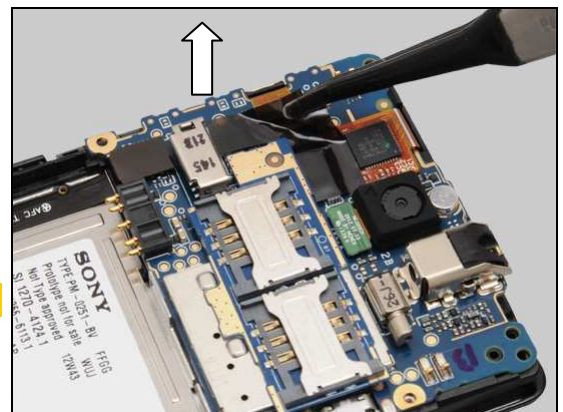
Gently raise the Rear Cover Sub Assembly at the bottom and remove it.



3.5 TP LCM FPC Mylar

Gently peel off the TP LCM FPC Mylar with a Flex Film Assembly Tool.

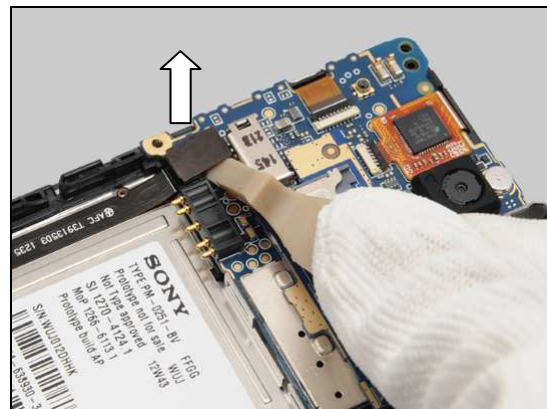
Scrap! Not to be reused!



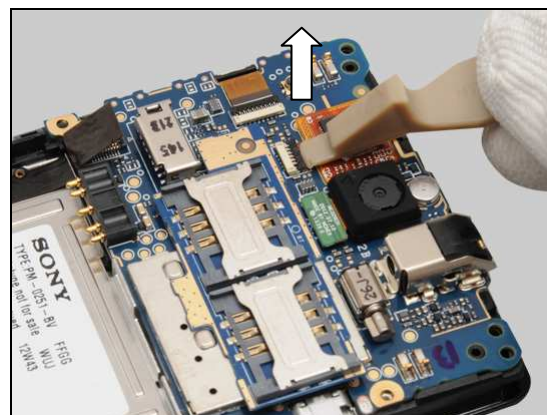
Disassembly

3.6 Front Cover Assembly

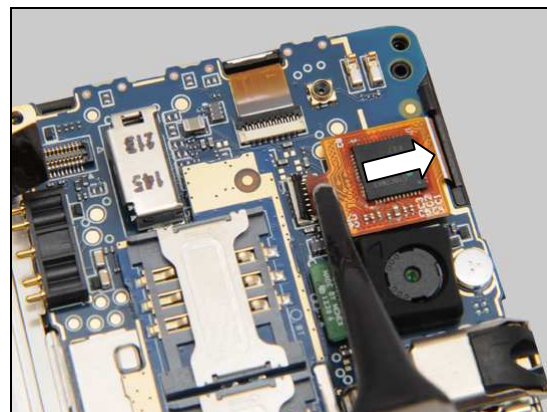
Gently unsnap the BtB connector of the FPC SUB PBA to the main PBA by using the Front Opening Tool.



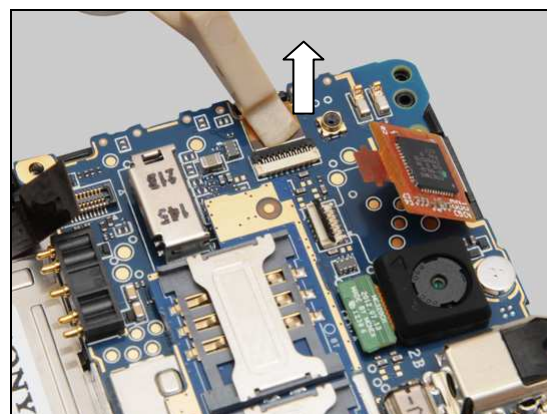
Unlock the ZIF connector of the Touch Panel to the main PBA.



Release the flex part by using a Flex Film Assembly Tool.

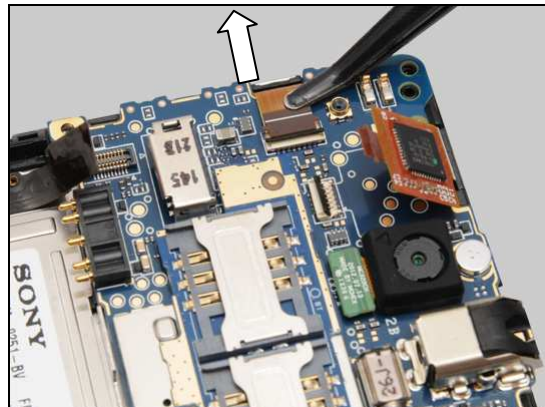


Unlock the ZIF connector of the LCD TFT to the main PBA.



Disassembly

Release the flex part.



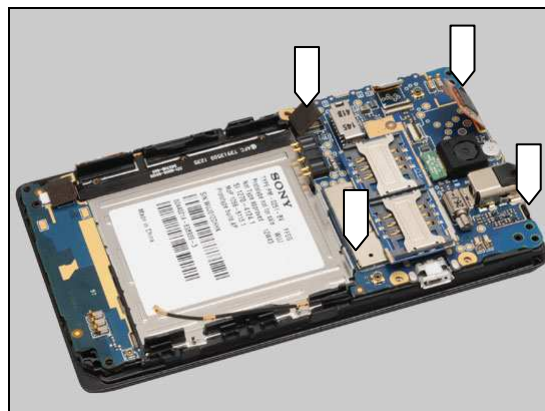
Disconnect this end of the RF Cable.



Release the RF Cable from the two hooks.

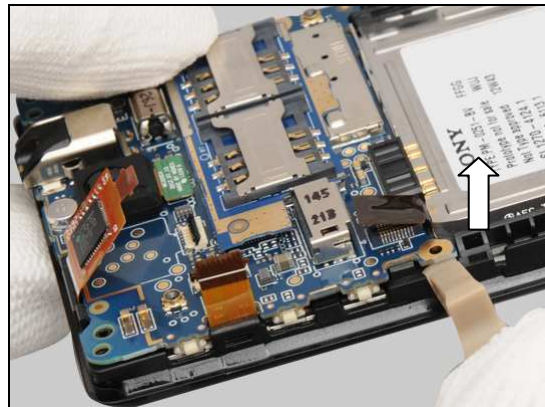


There are four hooks securing the main PBA.

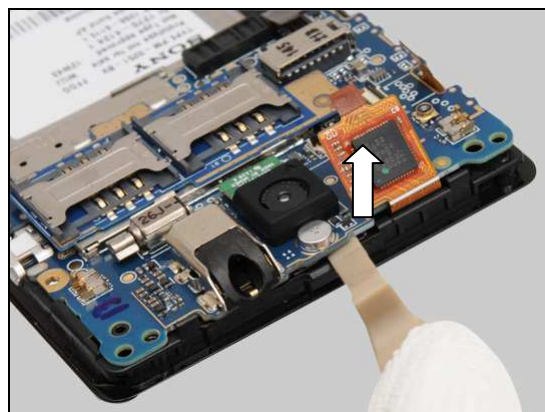


Disassembly

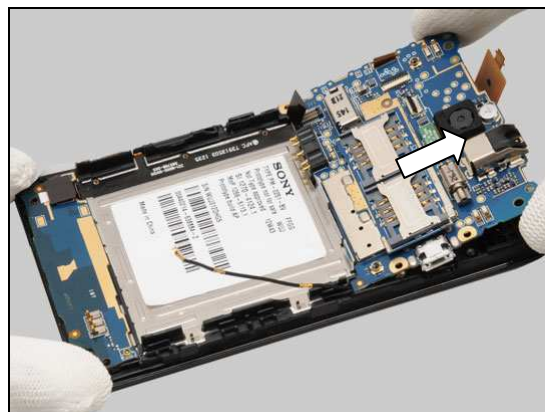
Insert a Front Opening Tool and gently lift up to release this hook as shown in picture.



Do the same on the top side to release the hooks.

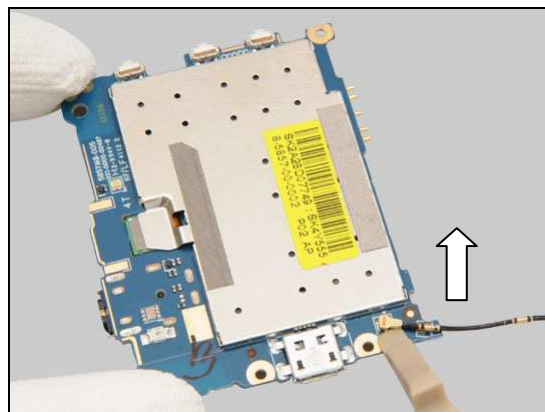


Release the main PBA unit from the front cover assembly.



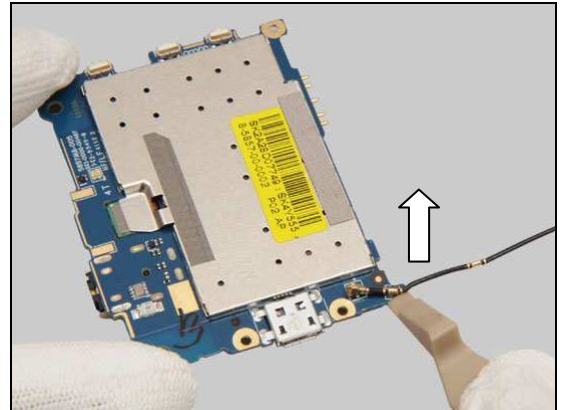
3.7 RF Cable & Main PBA

Gently disconnect the connector by using a Front Opening Tool as shown.



Disassembly

Unsnap this hook as shown and remove the RF Cable.



4 Replacement

4.1 Battery Cover

Follow the 3.1 Disassembly instructions!

Prepare a new Battery Cover.

Follow the 5.7 Reassembly instructions!



4.2 Battery Lower Cover

Follow the 3.1 – 3.3 Disassembly instructions!

Prepare a new Battery Lower Cover.

Follow the 5.5 – 5.7 Reassembly instructions!



4.3 Rear Cover Sub Assembly

Follow the 3.1 – 3.4 Disassembly instructions!

Follow the 4.15 Loudspeaker Removal instructions!

Prepare a new Rear Cover Sub Assembly.

Follow the 4.15 Loudspeaker Installation instructions!

Follow the 5.4 – 5.7 Reassembly instructions!

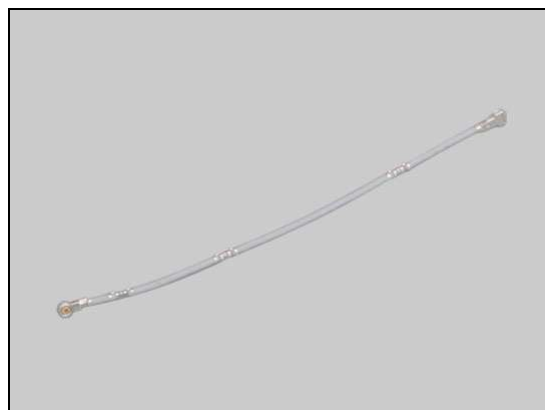


4.4 RF Cable

Follow the 3.1 – 3.7 Disassembly instructions!

Prepare a new RF Cable.

Follow the 5.1 – 5.7 Reassembly instructions!



Replacement

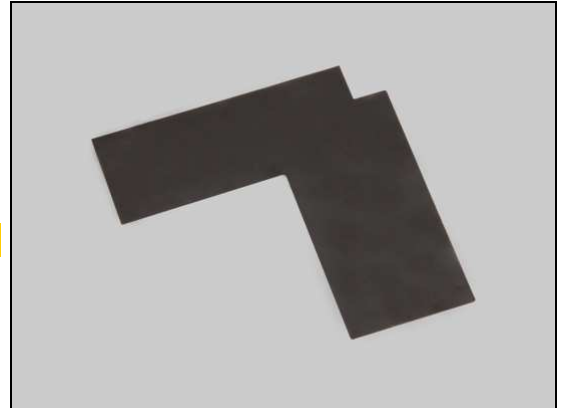
4.5 TP LCM FPC Mylar

Follow the 3.1 – 3.5 Disassembly instructions!

Scrap! Not to be reused!

Prepare a new TP LCM FPC Mylar.

Follow the 5.3 – 5.7 Reassembly instructions!



Replacement

4.6 Camera

Follow the 3.1 – 3.4 Disassembly instructions!

Follow the 4.7 Removal instructions!

Carry out the Removal as described below.

Prepare a new Camera.

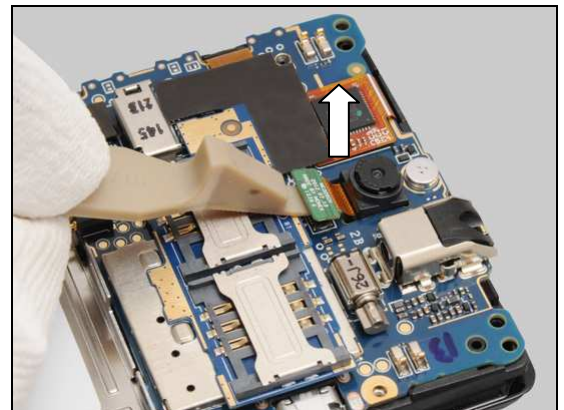
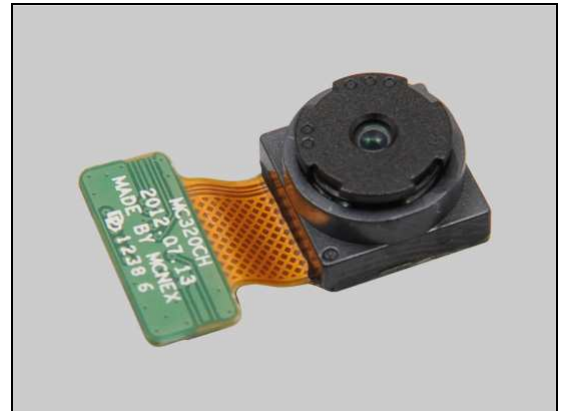
Carry out the Installation as described below.

Follow the 4.7 Installation instructions!

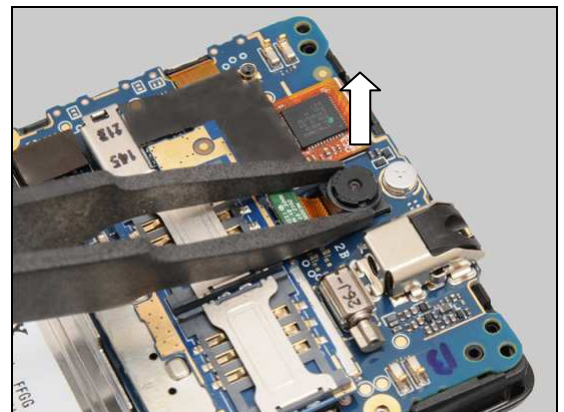
Follow the 5.4 – 5.7 Reassembly instructions!

REMOVAL

Gently disconnect the BtB connector by using a Front Opening Tool.

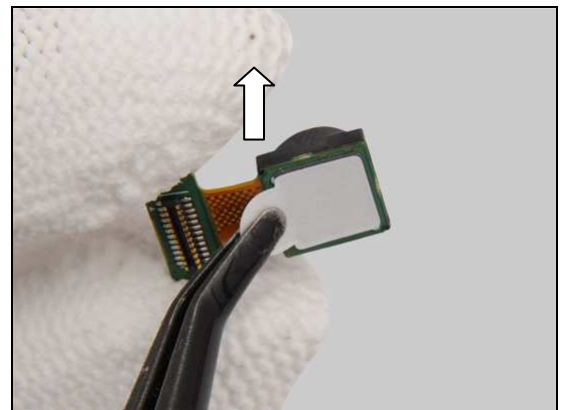


Detach to remove the Camera by using the Tweezers (ESD-safe & non-metallic) as shown in picture.



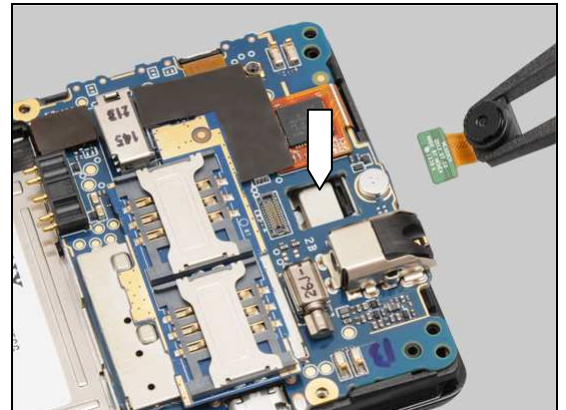
INSTALLATION

Peel off the protection film of the new Camera.

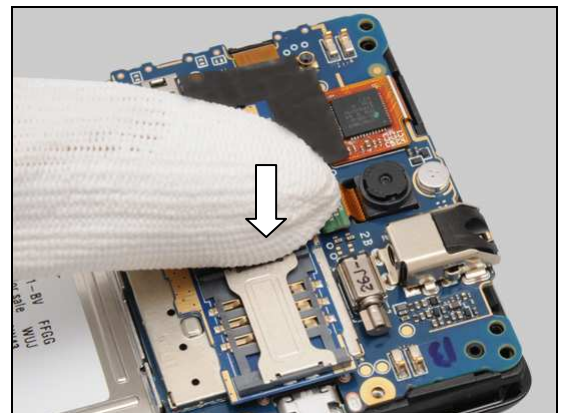


Replacement: Camera

Place the Camera on the proper position by using the Tweezers (ESD-safe & non-metallic).

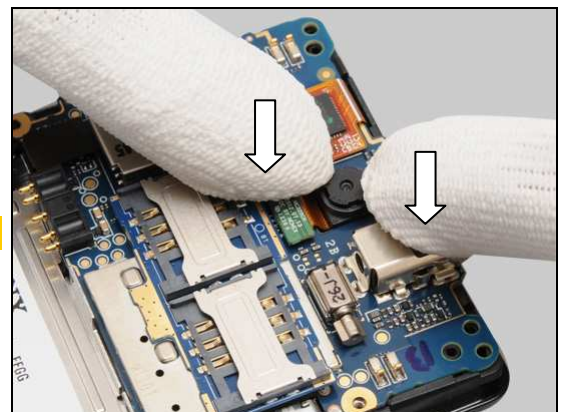


Snap the BtB connector.



Press the Camera to secure its attachment and position.

Do not touch the camera lens!



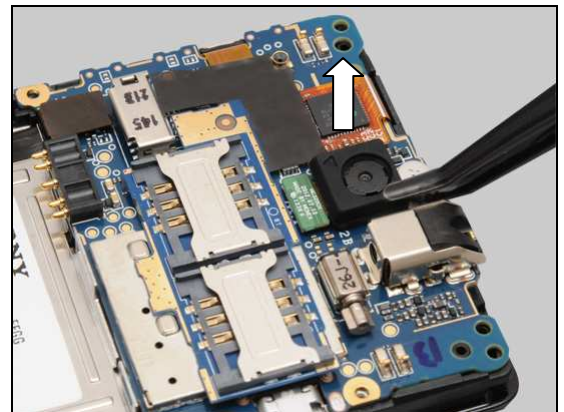
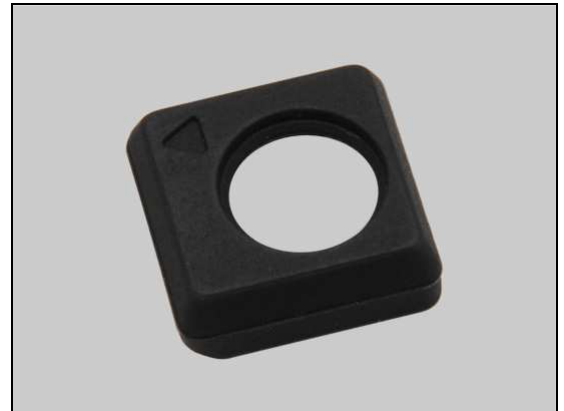
Replacement

4.7 Camera Holder

Follow the 3.1 – 3.4 Disassembly instructions!
 Carry out the Removal as described below.
 Prepare a new Camera Holder.
 Carry out the Installation as described below.
Follow the 5.4 – 5.7 Reassembly instructions!

REMOVAL

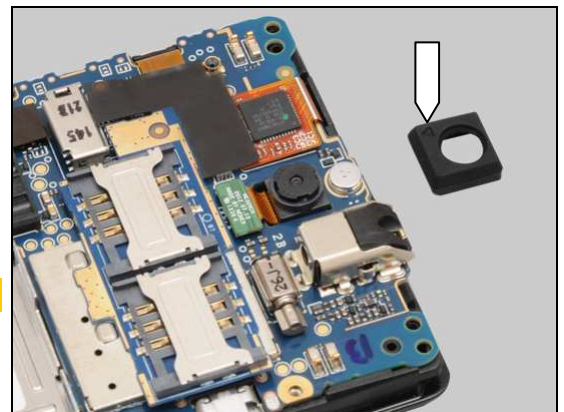
Remove the Camera Holder by using a Flex Film Assembly Tool.



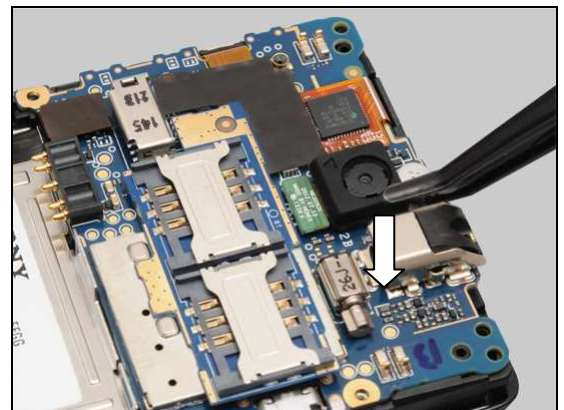
INSTALLATION

Place a new Camera Holder on its proper position.

Note the orientation of the Camera Holder!



Press to secure its position.



Replacement

4.8 Conductive Tape for Camera

Follow the 3.1 – 3.4 Disassembly instructions!

Follow the 4.7 and 4.6 Removal instructions!

Carry out the Removal as described below.

Prepare a new Conductive Tape for Camera.

Carry out the Installation as described below.

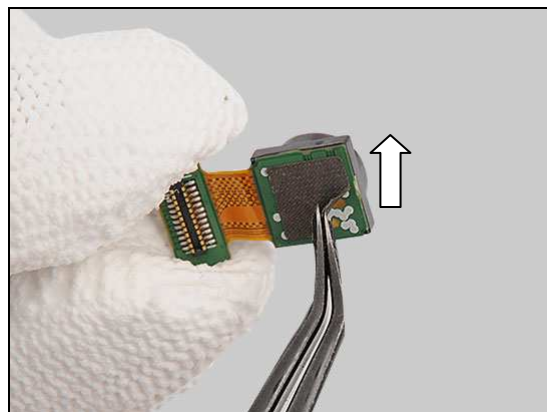
Follow the 4.6 and 4.7 Installation instructions!

Follow the 5.4 – 5.7 Reassembly instructions!

REMOVAL

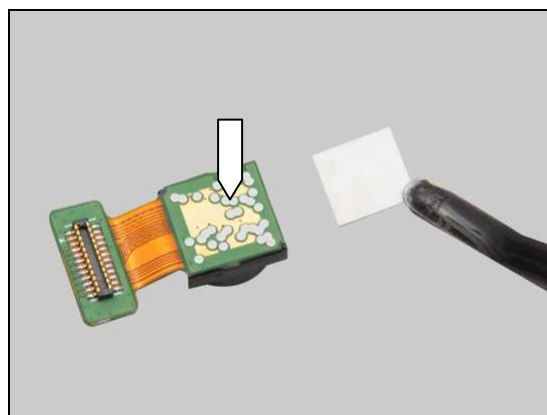
Peel off the Conductive Tape for Camera by using a Flex Film Assembly Tool.

Scrap! Not to be reused!

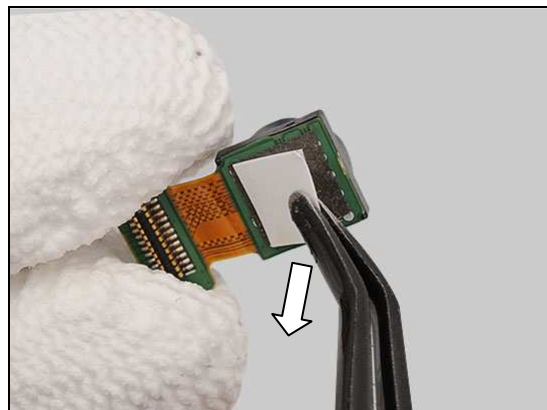


INSTALLATION

Place a new Conductive Tape for Camera on the proper position as indicated by the golden area.



Press to secure its attachment and peel off the protection film.



Replacement

4.9 CU Label

Follow the 3.1 – 3.2 Disassembly instructions!

Carry out the Removal as described below.

Prepare a new CU Label.

Carry out the Installation as described below.

Follow the 5.6 – 5.7 Reassembly instructions!

REMOVAL

Read the old Label Mobile Phone and write the information into the 'LabelMake' program.

Carefully peel off and remove the CU Label.

Scrap! Not to be reused!

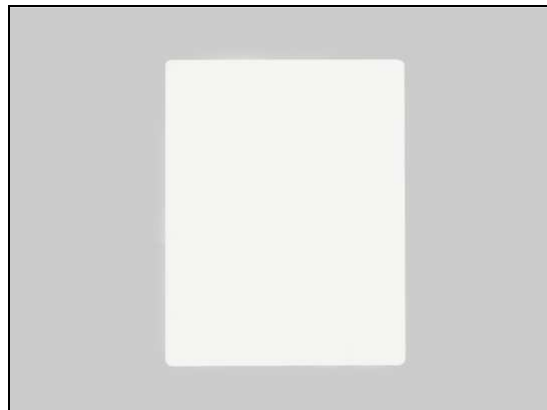
INSTALLATION

Check that the proper label format is loaded in the Zebra printer and write a new label by using the 'LabelMake' software.

Attach the new CU Label on its proper position aligning by the guide line as shown in picture.

Press along the surface of the CU Label to make it securely attached.

One label only is allowed!



Replacement

4.10 FPC SUB PBA

Follow the 3.1 – 3.4 Disassembly instructions!

Carry out the Removal as described below.

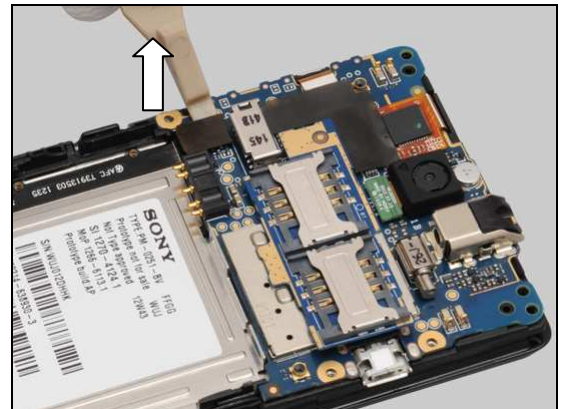
Prepare a new FPC SUB PBA.

Carry out the Installation as described below.

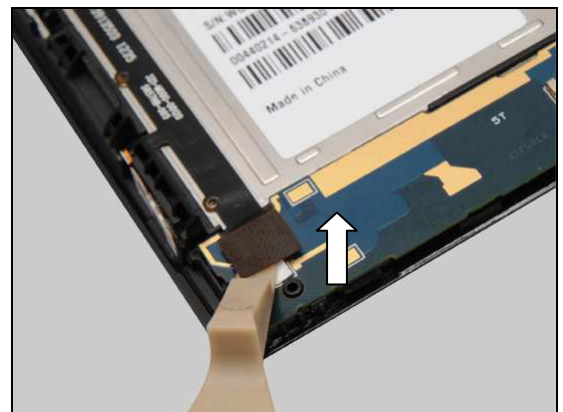
Follow the 5.4 – 5.7 Reassembly instructions!

REMOVAL

Gently unsnap the BtB connector by using a Front Opening Tool.



Do the same to this end of the FPC SUB PBA.



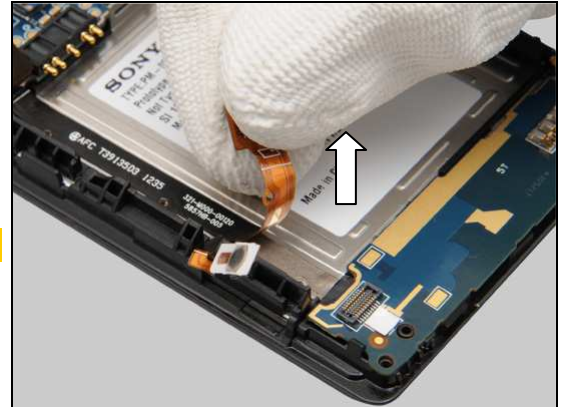
Detach the foil from the Front Cover Sub Assembly by using a Flex Film Assembly Tool.



Replacement: FPC SUB PBA

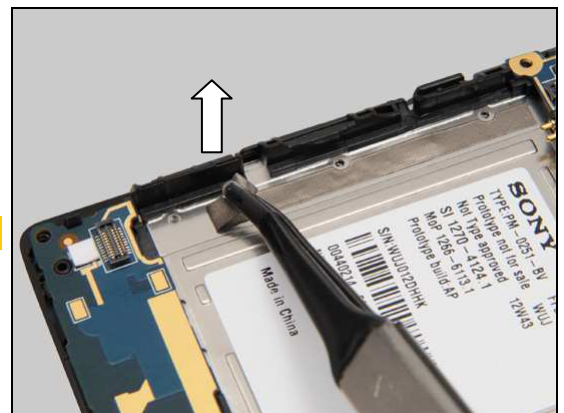
Gently peel off the FPC SUB PBA by fingers as shown in picture.

Scrap! Not to be reused!



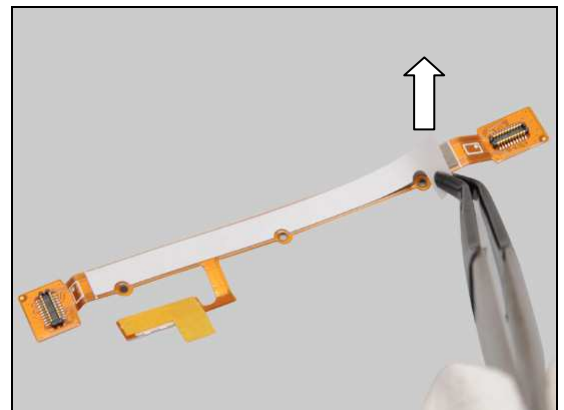
Detach to remove the remaining adhesive.

Scrap! Not to be reused!



INSTALLATION

Peel off the protection film of the new FPC SUB PBA.



Place the FPC SUB PBA on its proper position as indicated in picture.



Replacement: FPC SUB PBA

Press along to secure its attachment and position.



Gently peel off the protection film of the camera key dome.



Insert the camera key dome into the cavity as shown in picture.



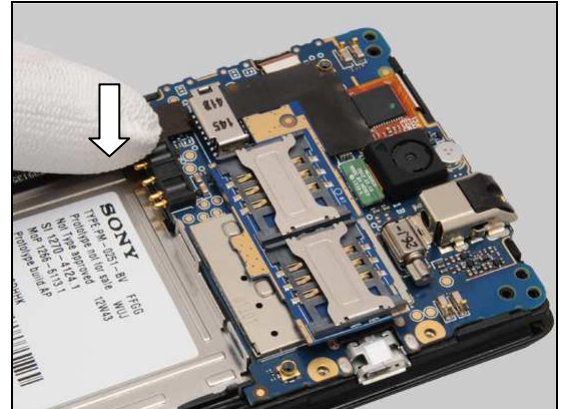
Press to secure its attachment and position.

Do not damage the key dome!

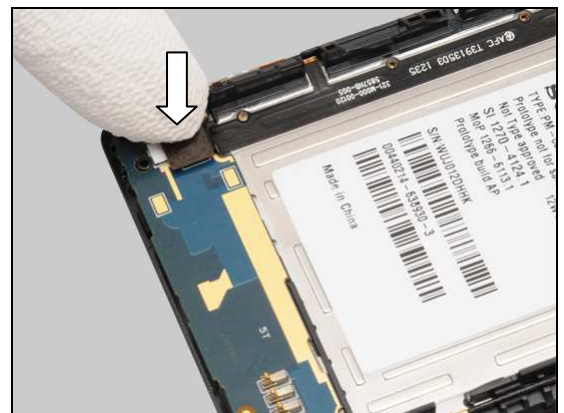


Replacement: FPC SUB PBA

Press to snap the BtB connector of the FPC SUB PBA to the main PBA.



Do the same to the BtB connector of the FPC SUB PBA to the Sub PBA.



Replacement

4.11 Front Cover Sub Assembly

Follow the 3.1 – 3.6 Disassembly instructions!

Follow the 4.16 Receiver, 4.18, 4.19 and 4.12 Removal instructions!

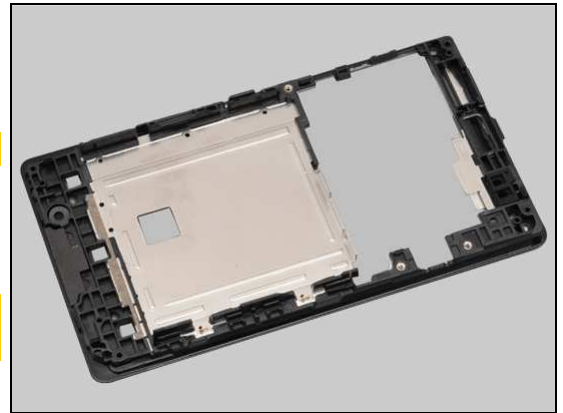
Scrap! Not to be reused!

Prepare a new Front Cover Sub Assembly.

Follow the 4.12, 4.19, 4.16 Receiver Installation instructions, 4.10, 4.18 Sub PBA and 4.9 Installation instructions!

Peel off the protection film of the Conductive adhesive Sub PBA before assembling the Sub PBA!

Follow the 5.2 – 5.7 Reassembly instructions!



Replacement

4.12 LCD TFT

Follow the 3.1 – 3.6 Disassembly instructions!

Follow the 4.18 Sub PBA, 4.16 Receiver and 4.19 Removal instructions!

Carry out the Removal as described below.

Prepare a new LCD TFT and Front Cover Sub Assembly.

Carry out the Installation as described below.

Follow the 4.19, 4.10, 4.16 Receiver, 4.18 Sub PBA and 4.9 Installation instructions!

Follow the 5.2 – 5.7 Reassembly instructions!

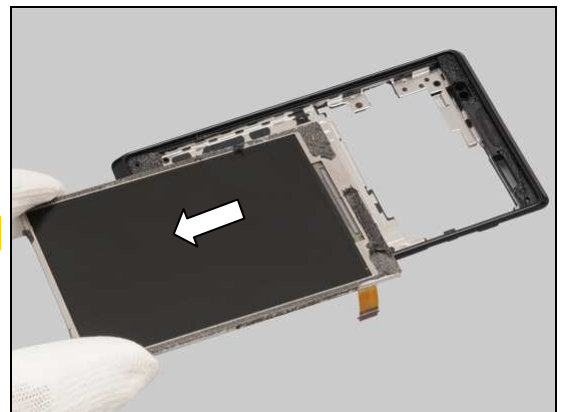
REMOVAL

Gently insert a Front Opening Tool and pull upwards to release the LCD TFT as shown in picture.



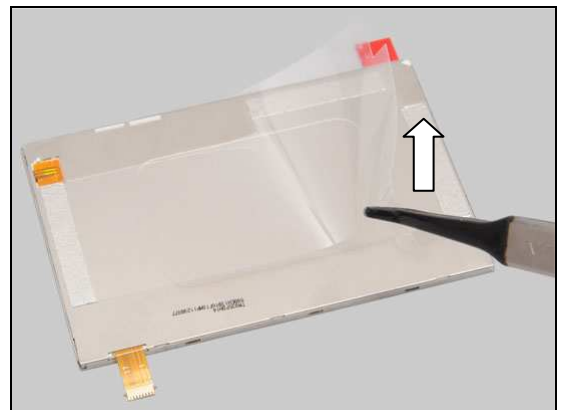
Remove the LCD TFT.

Scrap! Do not reuse the Front Cover Sub Assembly!



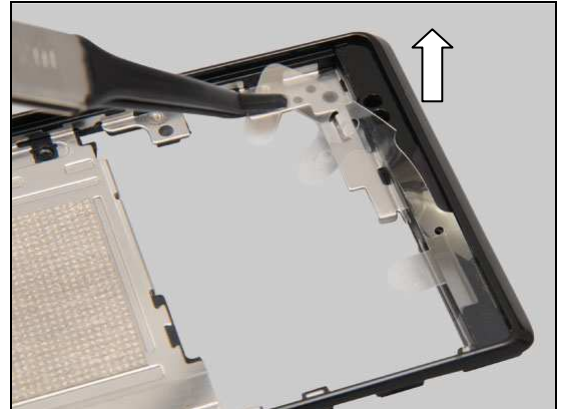
INSTALLATION

Peel off the protection film of the new LCD TFT.



Replacement: LCD TFT

Peel off the protection film on the new Front Cover Sub Assembly.



Insert the FPC of the LCD TFT into the hole of the Front Cover Sub Assembly as shown and lay down the LCD TFT.



Peel off the protection film of LCD TFT on this side.



Replacement

4.13 Liquid Intrusion Label (on main PBA)

Follow the 3.1 – 3.4 Disassembly instructions!

Carry out the Removal as described below.

Prepare a new Liquid Intrusion Label.

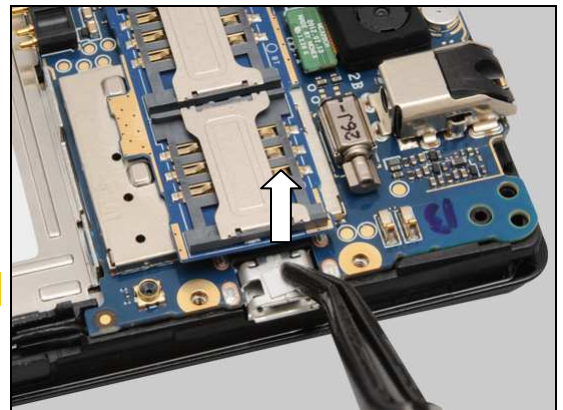
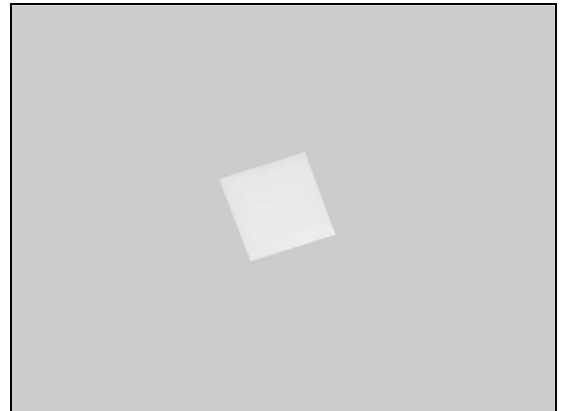
Carry out the Installation as described below.

Follow the 5.4 – 5.7 Reassembly instructions!

REMOVAL

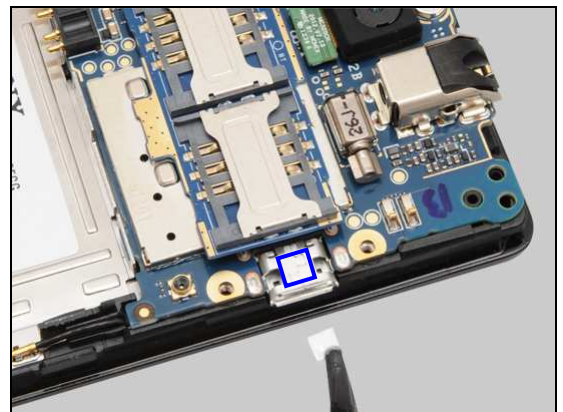
Gently peel off the Liquid Intrusion Label by using a Flex Film Assembly Tool.

Scrap! Not to be reused!

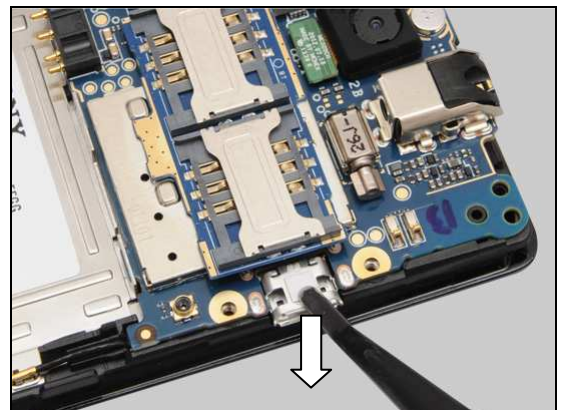


INSTALLATION

Place the new Liquid Intrusion Label on its proper position as indicated by the blue lines.



Press to secure its attachment and position.



Replacement

4.14 Liquid Intrusion Label (on Sub PBA)

Follow the 3.1 – 3.4 Disassembly instructions!
 Carry out the Removal as described below.
 Prepare a new Liquid Intrusion Label.
 Carry out the Installation as described below.
Follow the 5.4 – 5.7 Reassembly instructions!

REMOVAL

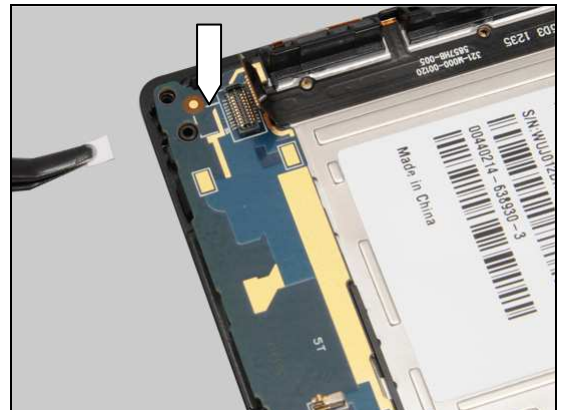
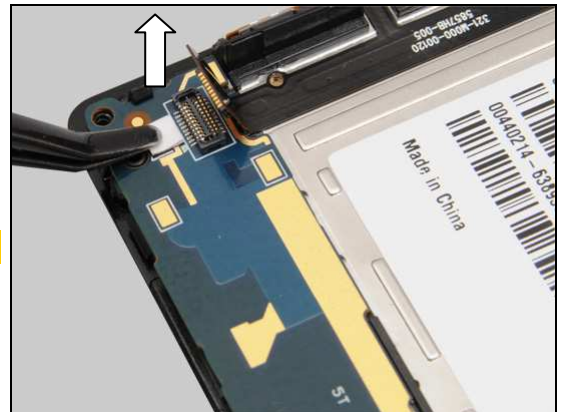
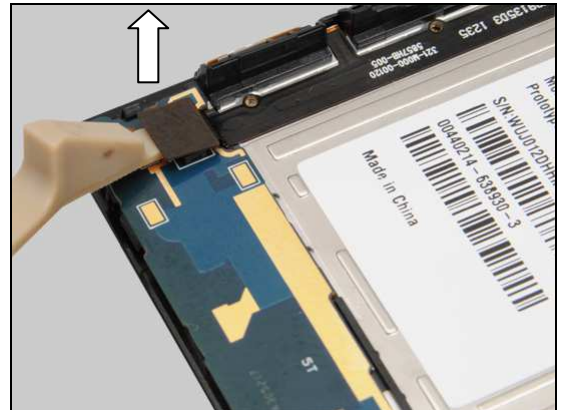
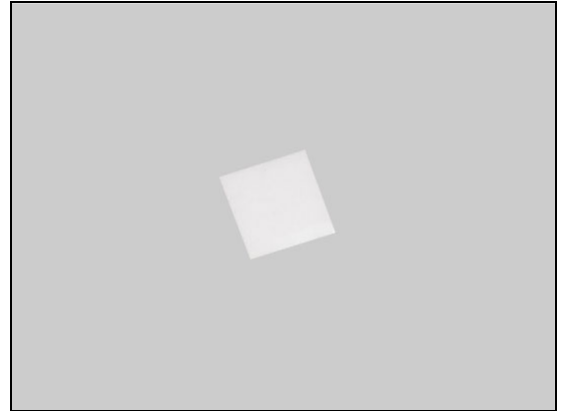
Unlock the BtB connector of the FPC SUB PBA to the Sub PBA by using a Front Opening Tool.

Gently peel off the Liquid Intrusion Label by using a Flex Film Assembly Tool.

Scrap! Not to be reused!

INSTALLATION

Place the new Liquid Intrusion Label on its proper position as indicated by the white lines.

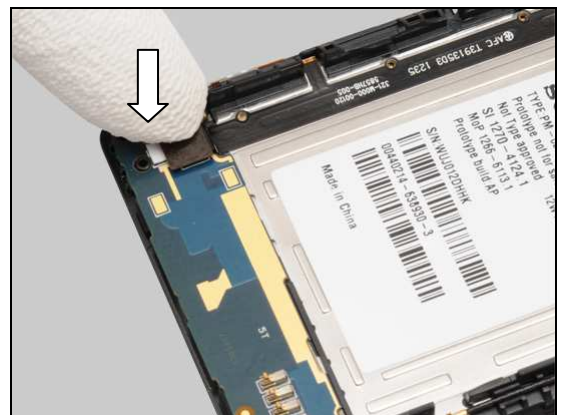


Replacement: Liquid Intrusion Label (on Sub PBA)

Press to secure its attachment and position.



Press to snap the BtB connector.



Replacement

4.15 Loudspeaker & Speaker Sponge with Mesh

Follow the 3.1 – 3.4 Disassembly instructions!

Carry out the Removal as described below.

Prepare a new Loudspeaker and Speaker Sponge with Mesh.

Carry out the Installation as described below.

Follow the 5.4 – 5.7 Reassembly instructions!

REMOVAL

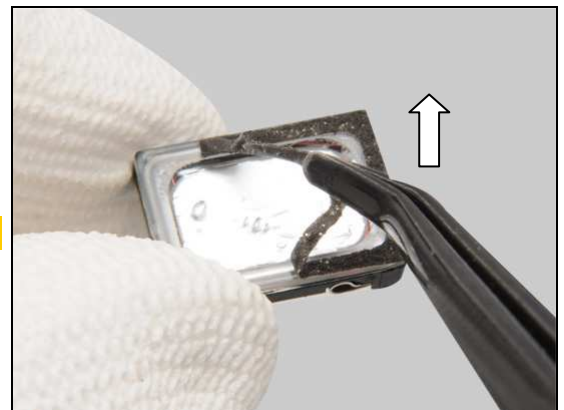
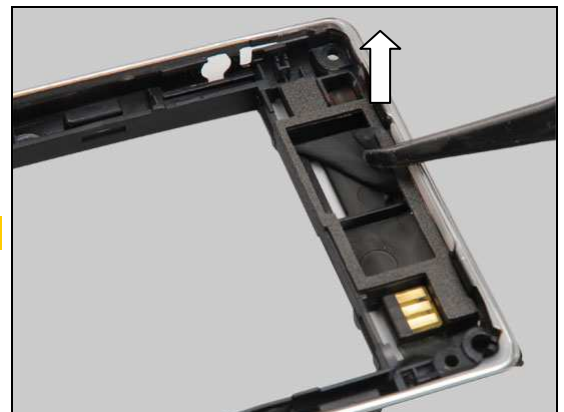
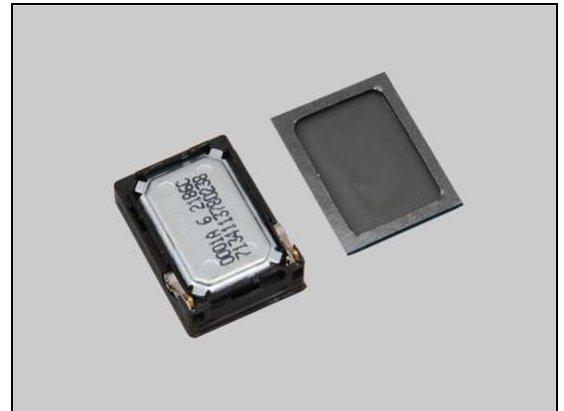
Pull upwards to release the Loudspeaker by using a Front Opening Tool.

Detach to remove the remains.

Scrap! Not to be reused!

Detach to remove the remains on the Loudspeaker.

Do this action when reuse the Loudspeaker!



Replacement: Loudspeaker & Speaker Sponge with Mesh

INSTALLATION

Place the new Speaker Sponge with Mesh on the proper position as shown in picture.

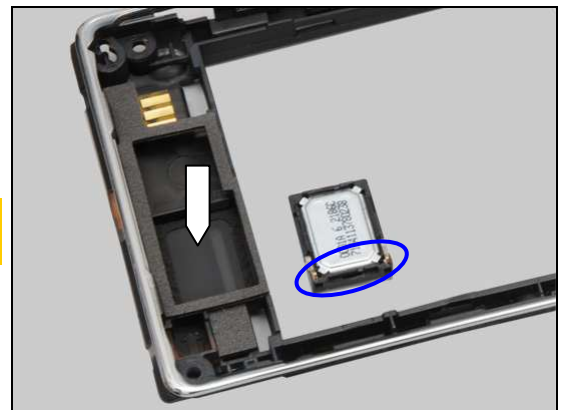


Press to secure its attachment and position.



Place the new Loudspeaker in the cavity.

Note the orientation of the Loudspeaker to be installed as shown!



Press to secure its attachment.

Do not touch the contact pins!



Replacement

4.16 Receiver & Receiver Sponge

Follow the 3.1 – 3.6 Disassembly instructions!
 Carry out the Removal as described below.
 Prepare a new Receiver and Receiver Sponge.
 Carry out the Installation as described below.
Follow the 5.2 – 5.7 Reassembly instructions!

REMOVAL

Pull upwards to release the Receiver by using a Front Opening Tool.

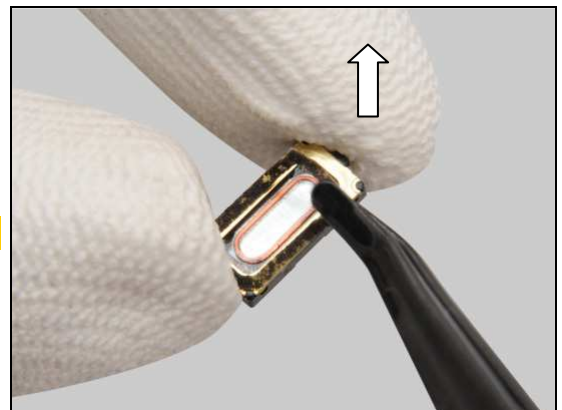
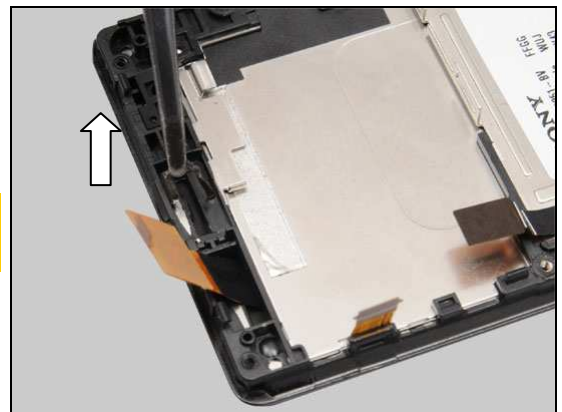
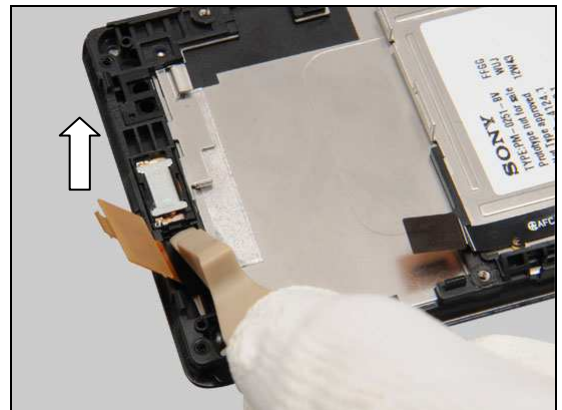
Detach to remove the remains.

Scrap! Not to be reused!

Be careful! Do not damage the earphone mesh!

Detach to remove the remains on the Receiver.

Do this action when reuse the Receiver!

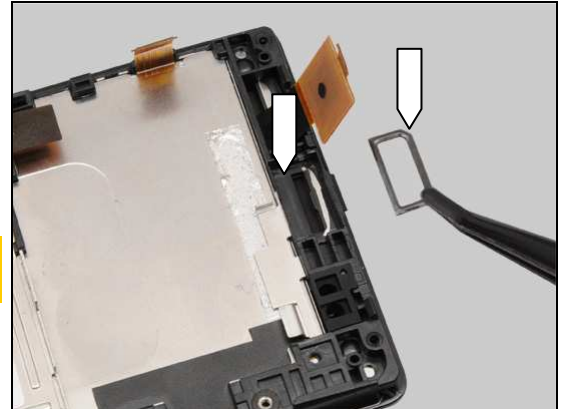


Replacement: Receiver & Receiver Sponge

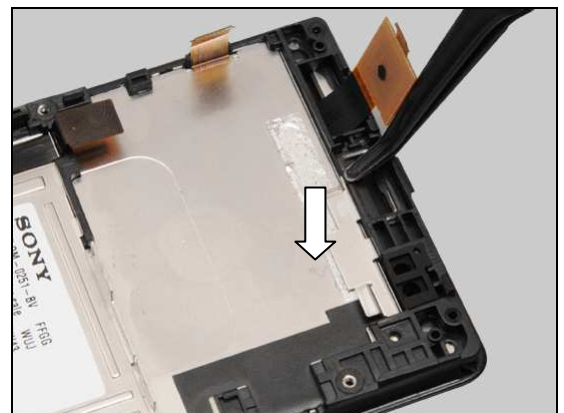
INSTALLATION

Place the new Receiver Sponge in the cavity.

Note the orientation of the Receiver Sponge to be installed as shown!

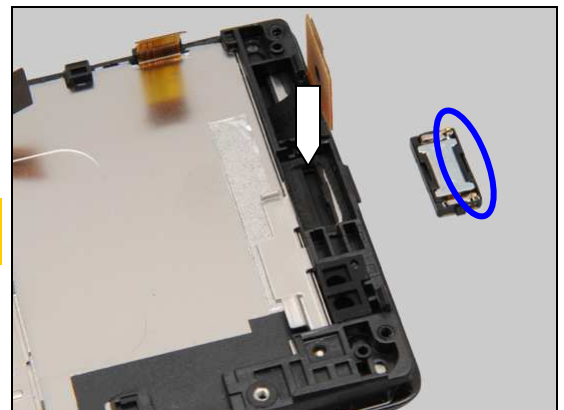


Press to secure its attachment and position.



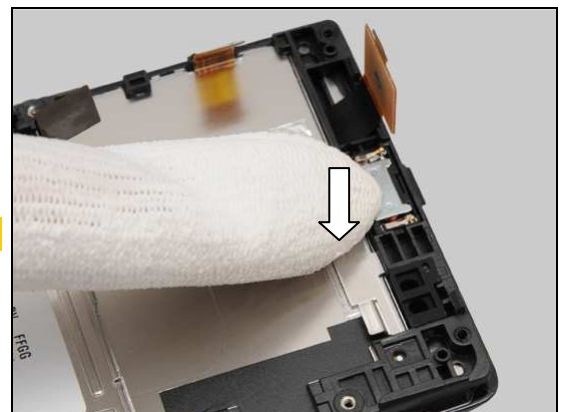
Place the new Receiver on the proper position.

Note the orientation of the Receiver to be installed as shown!



Press to secure its attachment.

Do not touch the contact pins!



Replacement

4.17 SIM PBA Assy & Conductive Adhesive

Follow the 3.1 – 3.4 Disassembly instructions!

Carry out the Removal as described below.

Prepare a new SIM PBA Assy and Conductive Adhesive.

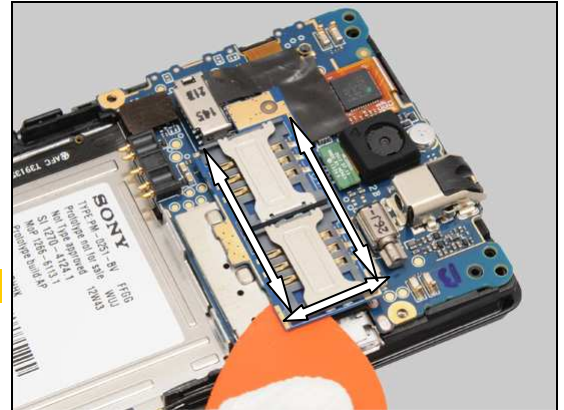
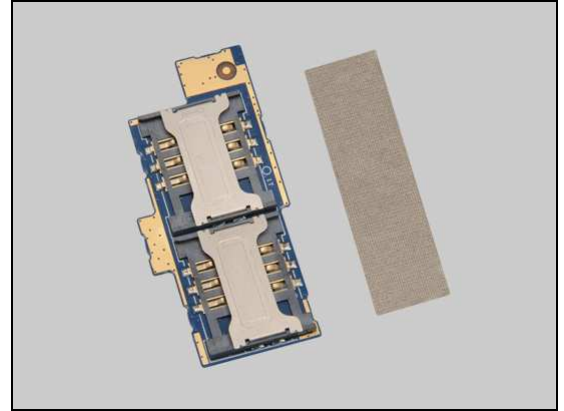
Carry out the Installation as described below.

Follow the 5.4 – 5.7 Reassembly instructions!

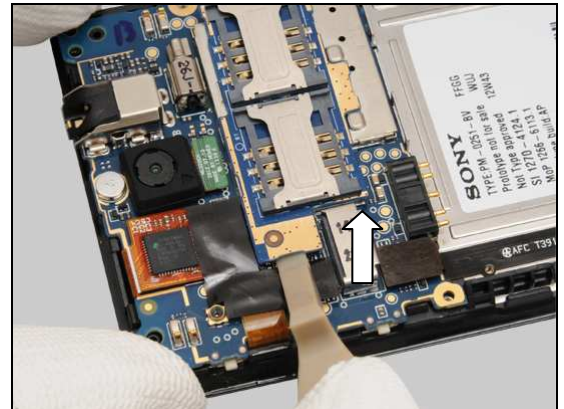
REMOVAL

Gently insert a Guitar Pick and slide back and forth to release the SIM PBA Assy as shown in picture.

Do not damage components on main PBA!

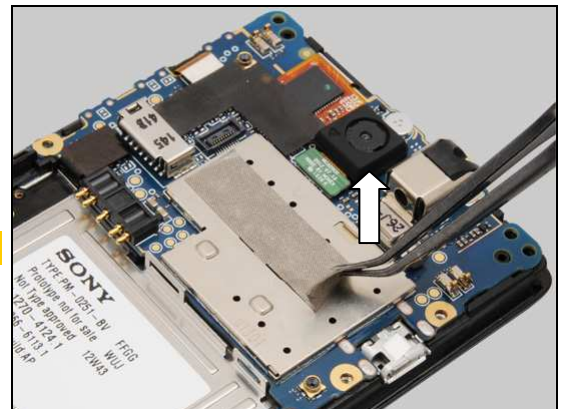


Unsnap the BtB connector by using a Front Opening Tool and remove the SIM PBA Assy.



Peel off the Conductive Adhesive by using a Flex Film Assembly Tool.

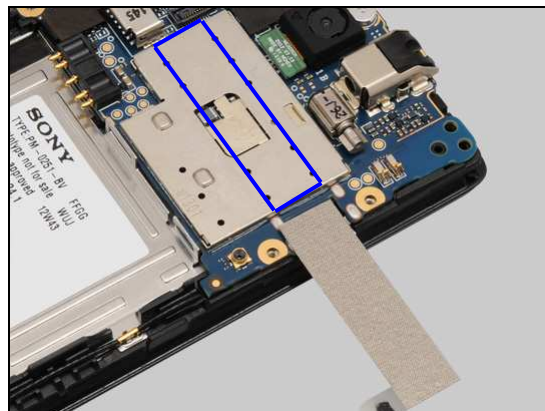
Scrap! Not to be reused!



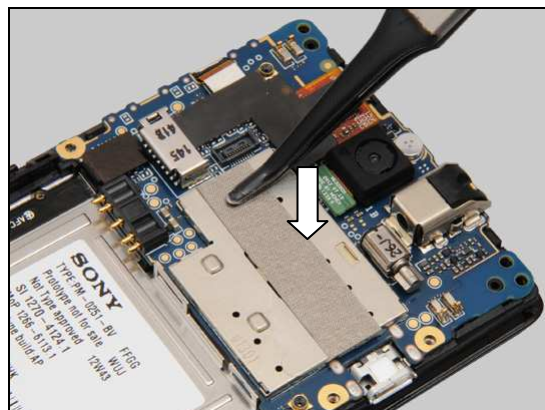
Replacement: SIM PBA Assy D-SIM & Conductive Adhesive D-SIM

INSTALLATION

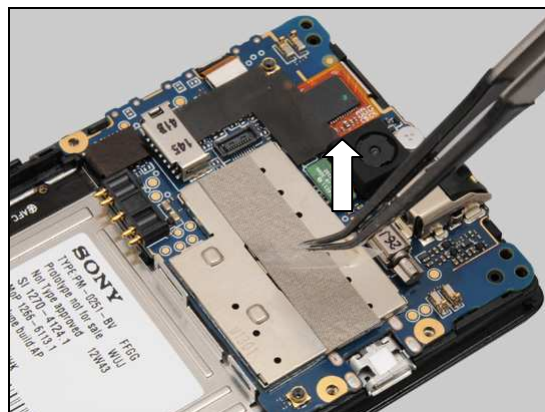
Place the new Conductive Adhesive on the proper position as indicated by the blue lines.



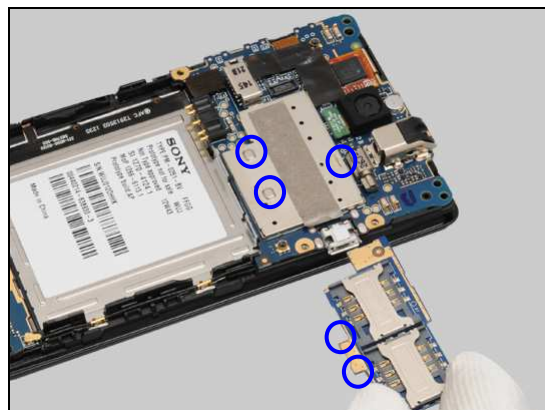
Press to secure its attachment and position.



Peel off the protection film.



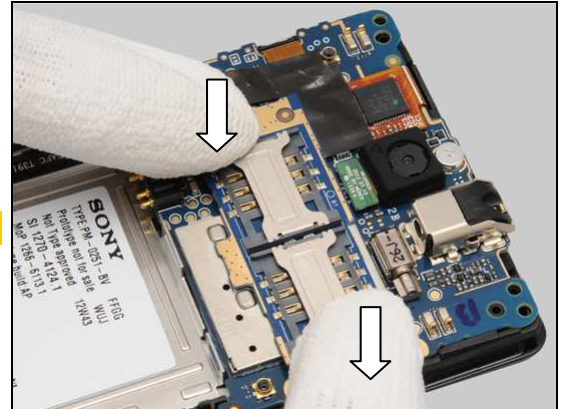
Place the new SIM PBA Assy on the proper position as indicated in picture.



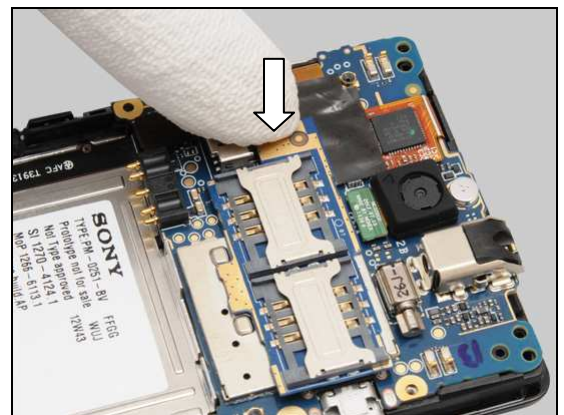
Replacement: SIM PBA Assy D-SIM & Conductive Adhesive

Press to secure its attachment and position.

Do not touch the contact pins on the SIM PBA Assy!



Snap the BtB connector.



Replacement

4.18 Sub PBA & Conductive adhesive Sub PBA

Follow the 3.1 – 3.4 Disassembly instructions!

Carry out the Removal as described below.

Prepare a new Sub PBA and Conductive adhesive Sub PBA.

Follow the 4.14 Installation instructions!

Carry out the Installation as described below.

Follow the 5.4 – 5.7 Reassembly instructions!

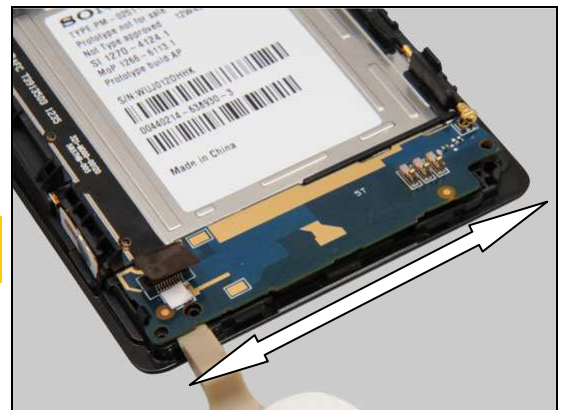
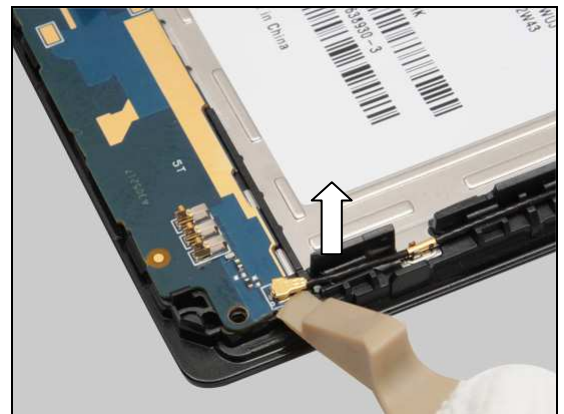
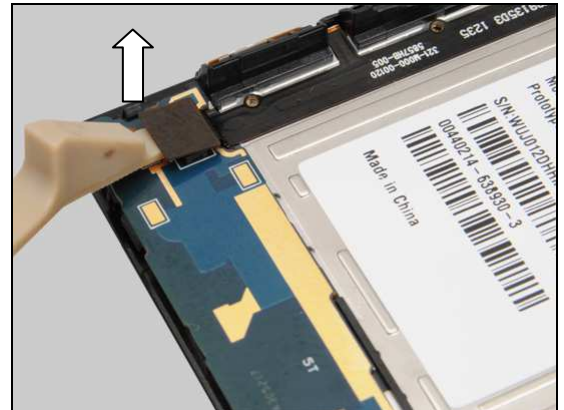
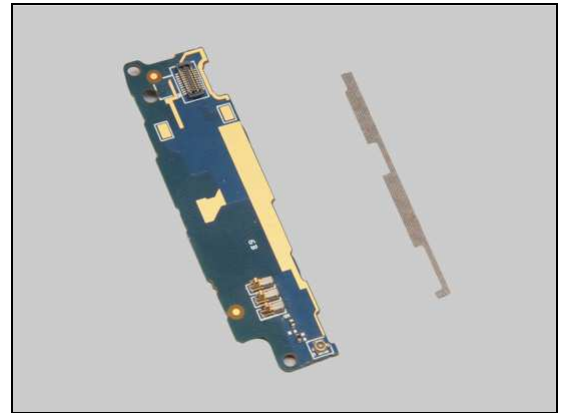
REMOVAL

Unsnap the BtB connector by using a Front Opening Tool.

Disconnect the connector of the RF Cable to the Sub PBA.

Insert the Front Opening Tool and slide back and forth to release the Sub PBA and remove it.

Be careful! Do not damage the components under the Sub PBA!

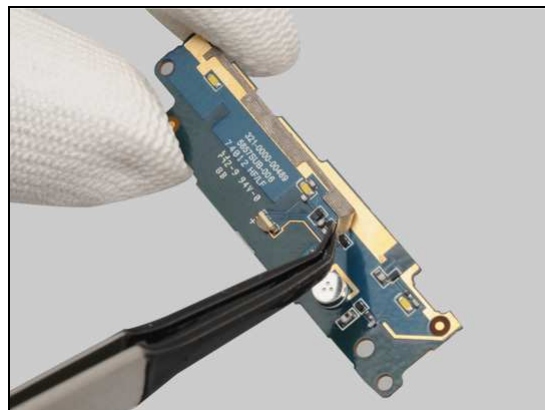


Replacement: Sub PBA & Conductive adhesive Sub PBA

Gently peel off the Conductive adhesive Sub PBA as shown.

Do this action when reuse the Sub PBA.

Scrap! Not to be reused!



INSTALLATION

Place the new Conductive adhesive Sub PBA on the proper position as indicated by the blue lines.



Press to secure its attachment.

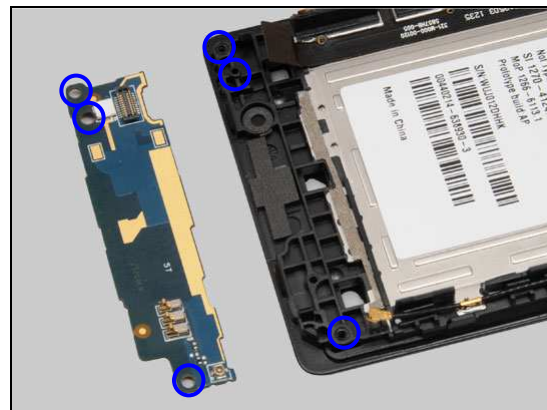


Peel off the protection film.



Replacement: Sub PBA & Conductive adhesive Sub PBA

Place the new Sub PBA on the proper position as indicated by the blue lines.



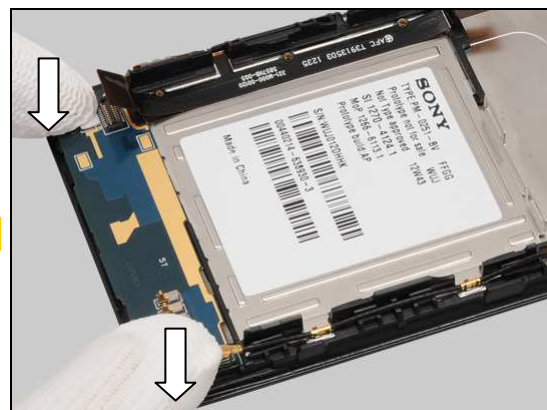
Insert this side of the Sub PBA into the hook of the Front Cover Sub Assembly as shown in picture and lay down the Sub PBA.

Make sure the end of the RF Cable is not under the Sub PBA!

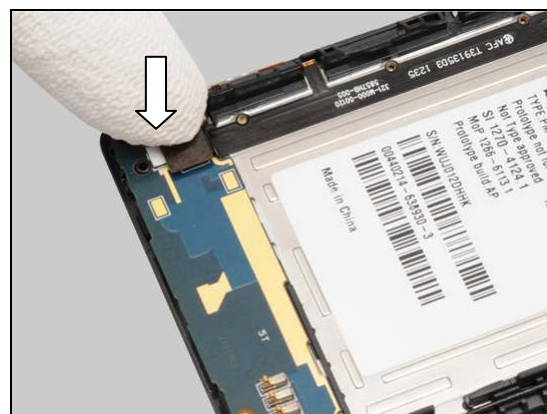


Press to snap the hooks and secure its attachment.

Be careful! Do not touch the pins on the Sub PBA!



Press to connect the BtB connector.



Replacement: Sub PBA & Conductive adhesive Sub PBA

Connect this end of the RF Cable by using a Flex Film Assembly Tool.



Replacement

4.19 Touch Panel

Follow the 3.1 – 3.6 Disassembly instructions!

Follow the 4.10, 4.16 Receiver and 4.18 Sub PBA Removal instructions!

Carry out the Removal as described below.

Follow the 4.12 Removal instructions!

Prepare a new Touch Panel and Front Cover Sub Assembly.

Follow the 4.12 Installation instructions!

Carry out the Installation as described below.

Follow the 4.10, 4.16 Receiver, 4.18 Sub PBA and 4.9 Installation instructions!

Follow the 5.2 – 5.7 Reassembly instructions!

REMOVAL

Gently insert a Guitar Pick into the earphone's external port and slide back and forth to release the Touch Panel.

Stop here! There has the FPC of the Touch Panel!

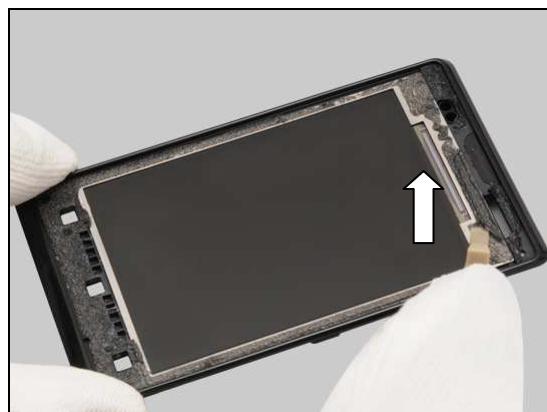
Lift up the Touch Panel gently and remove it.

Scrap! Not to be reused!

Detach to remove the remains on the LCD TFT.

Do not touch the screen of the LCD TFT!

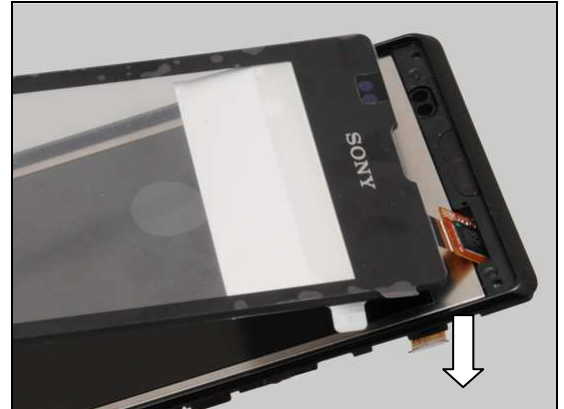
Scrap! Do not reuse the Front Cover Sub Assembly!



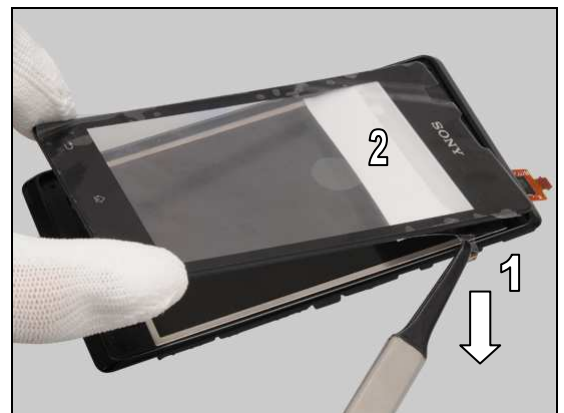
Replacement: Touch Panel

INSTALLATION

Insert the FPC of the new Touch Panel into the hole on the new Front Cover Sub Assembly.



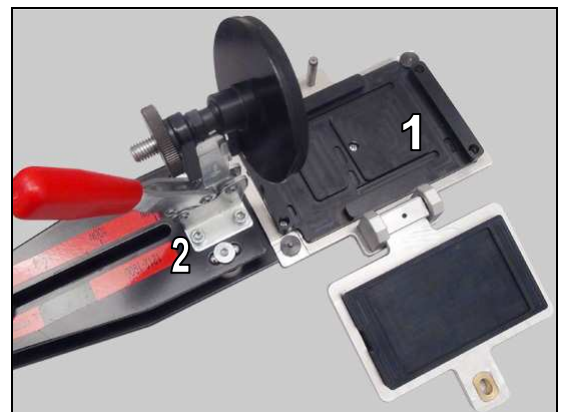
Peel off its two protection films.



Lay down the Touch Panel and gently press along to secure its position.



Fasten the LCD press insert (1) to the Pressure Tool (2).

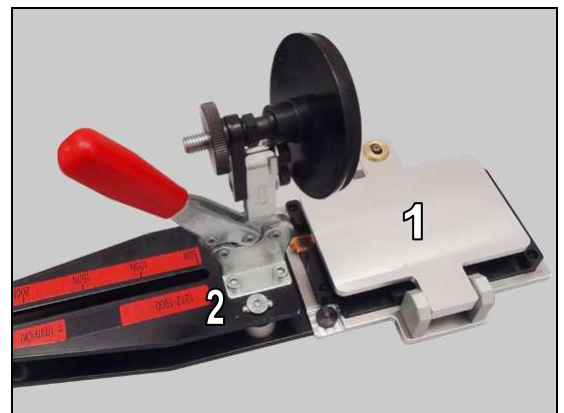


Replacement: Touch Panel

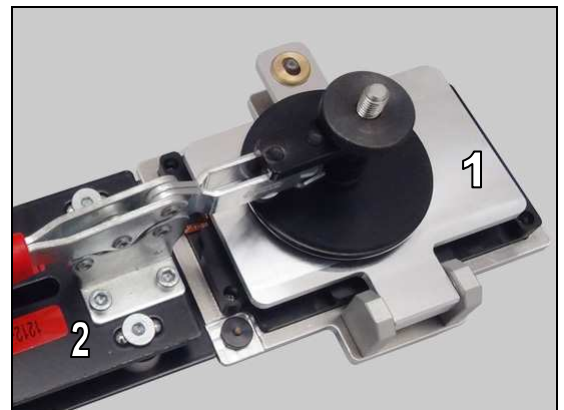
Place the front cover assembly in the LCD press insert (1) as shown.



Fasten the front cover assembly in the LCD press insert (1).



Press the handle of the Pressure Tool (2) with a pressure value of 250Ncm for 50 seconds.



Make sure its four sides are securely pressed!

Note: Touch Panel requires calibration after replacing the part!



Replacement

4.20 RF Connector Sponge

Follow the 3.1 – 3.4 Disassembly instructions!

Carry out the Removal as described below.

Prepare a new Loudspeaker and Speaker Sponge with Mesh.

Carry out the Installation as described below.

Follow the 5.4 – 5.7 Reassembly instructions!

REMOVAL

Peel off the RF Connector Sponge by using a Flex Film Assembly Tool.

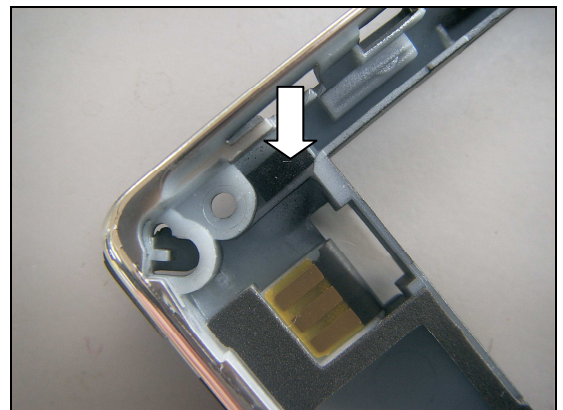
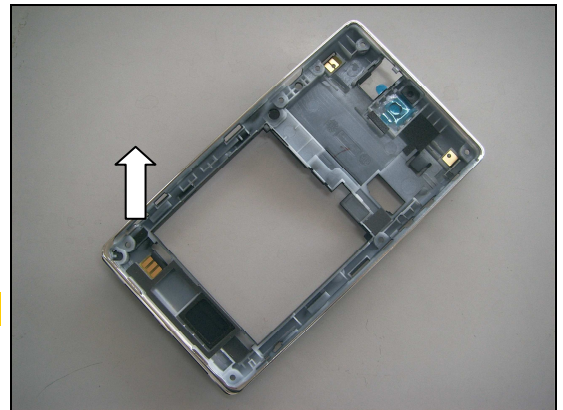
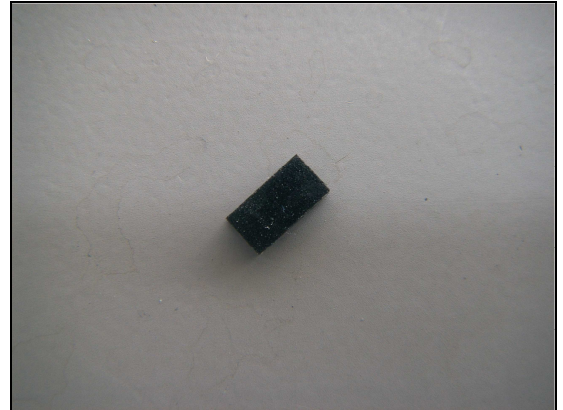
Remove the remains.

Scrap! Not to be reused!

INSTALLATION

Place the new RF Connector Sponge on its proper position as indicated in the picture.

Press to secure its attachment.



Replacement

4.21 Board Swap - Replacement

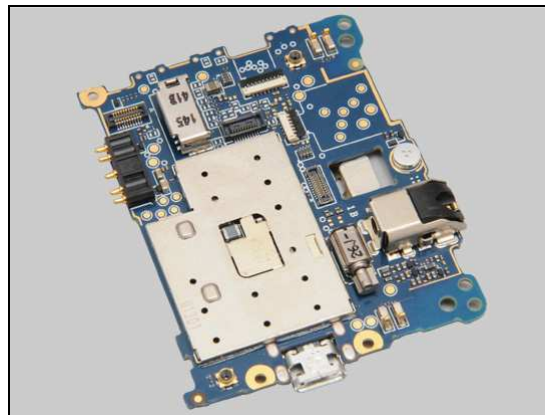
Follow the 3.1 – 3.7 Disassembly instructions!

Follow the 4.7, 4.6, 4.8 and 4.17 Removal instructions!

Replace the Swap Board.

Follow the 4.8, 4.6, 4.7, 4.13 and 4.17 Installation instructions!

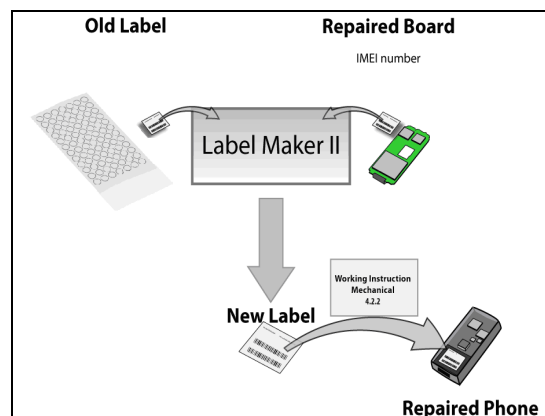
Follow the 5.1 – 5.7 Reassembly instructions!



4.22 Board Swap – Change Label

CHANGE LABEL

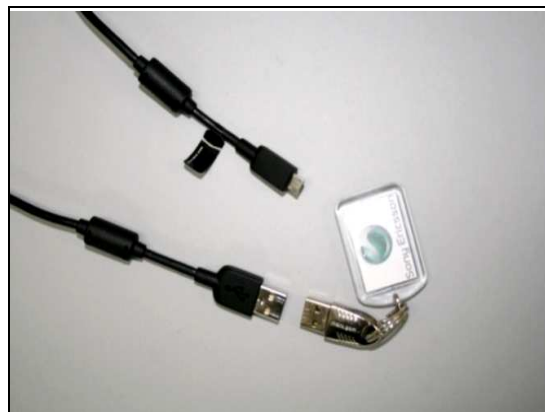
Follow the instructions in the Generic Repair Manual – Build swap for change of label.



4.23 Board Swap – Customize of Software

CUSTOMIZE OF SOFTWARE

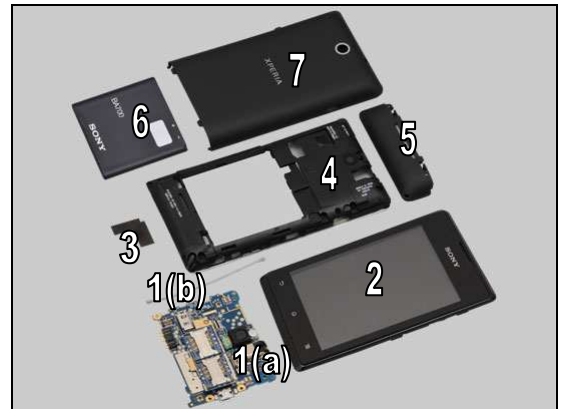
Follow the instructions in the Generic Repair Manual – Build swap for customization of the software.



5 Reassembly

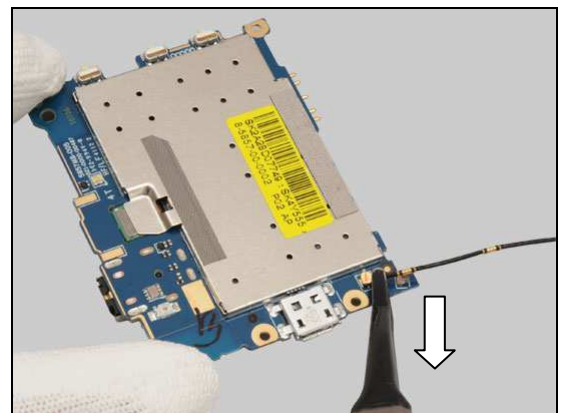
The reassembly is done in the following order:

1. Main PBA (a) & RF Cable (b)
2. Front cover assembly
3. TP LCM FPC Mylar
4. Rear Cover Sub Assembly
5. Battery Lower Cover
6. Battery
7. Battery Cover

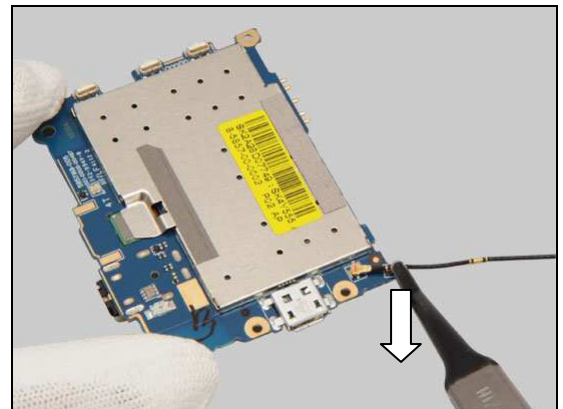


5.1 Main PBA & RF Cable

Connect the RF Cable to the main PBA by using a Flex Film Assembly Tool.



Press to snap this hook as shown in picture.



5.2 Front Cover Assembly

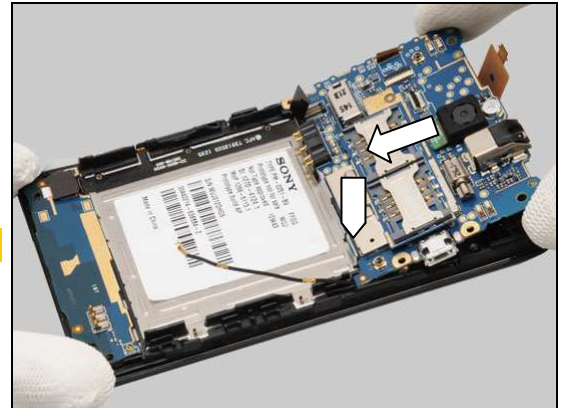
Prepare the main PBA unit and the front cover assembly.



Reassembly

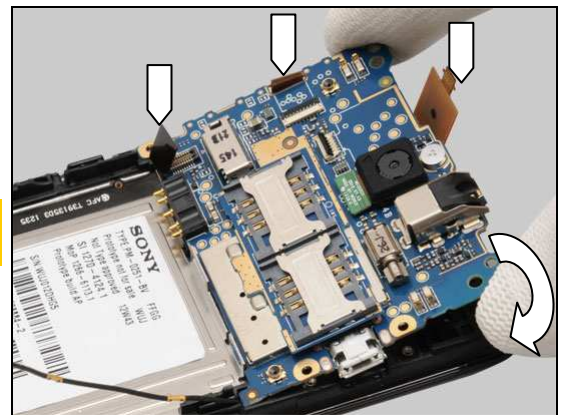
Insert the hook of the main PBA into the slot on the Front Cover Sub Assembly as shown in picture.

Be careful! Do not damage the RF Cable!



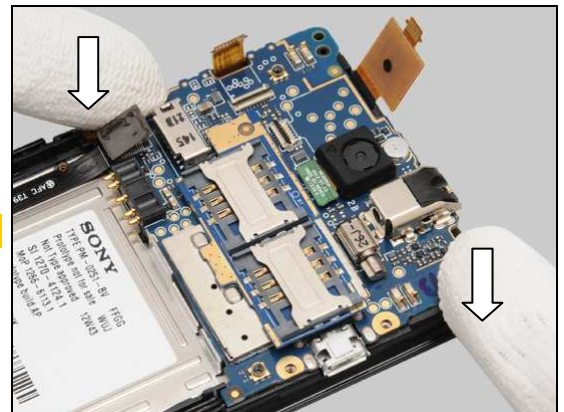
Lay down the main PBA.

Make sure that the FPC of the LCD TFT, FPC SUB PBA and Touch Panel are not under the main PBA!

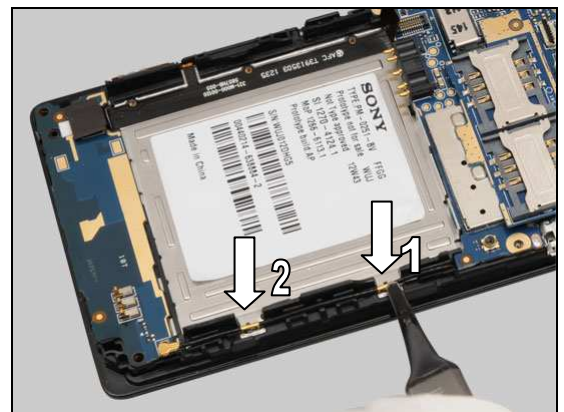


Press to snap the hooks.

Be careful! Do not press the components!



Gently place the RF Cable into the cavity on the Front Cover Sub Assembly and press to snap these two hooks as shown in picture.

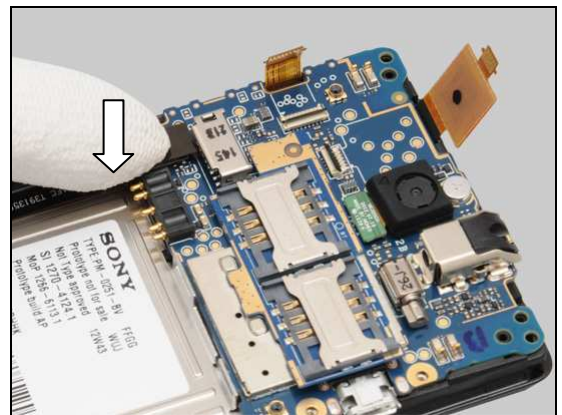


Reassembly

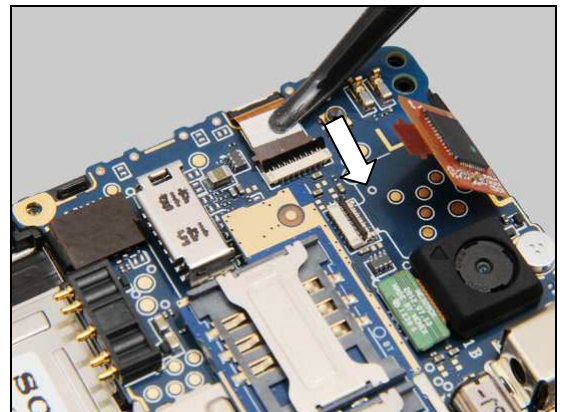
Connect this end of the RF Cable.



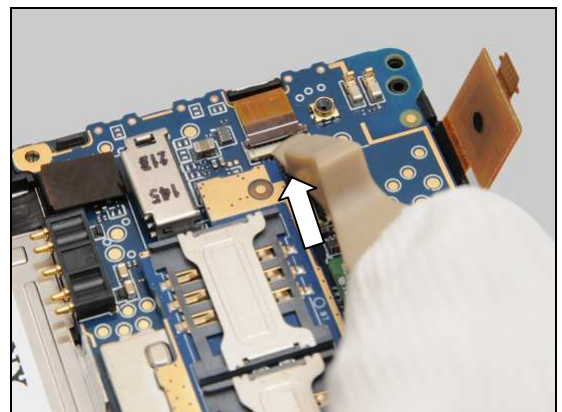
Press to snap the BtB connector as shown.



Insert the FPC of the LCD TFT into the ZIF connector on main PBA by using a Flex Film Assembly Tool as shown.

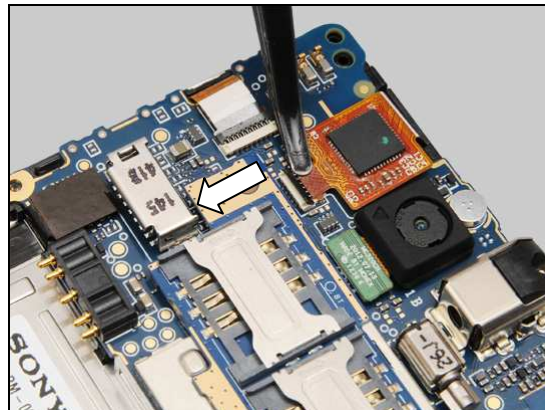


Lock the ZIF connector.



Reassembly

Insert the FPC of the Touch Panel into the ZIF connector on main PBA by using a Flex Film Assembly Tool as shown.

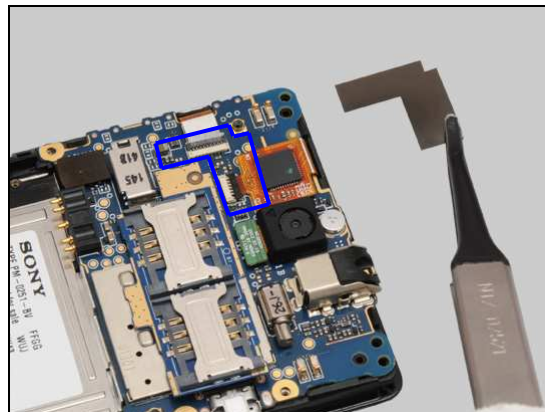


Lock the ZIF connector.

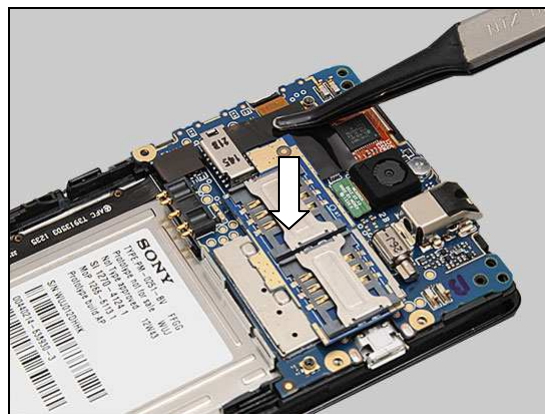


5.3 TP LCM FPC Mylar

Place a new TP LCM FPC Mylar on its proper position as indicated by the blue lines.



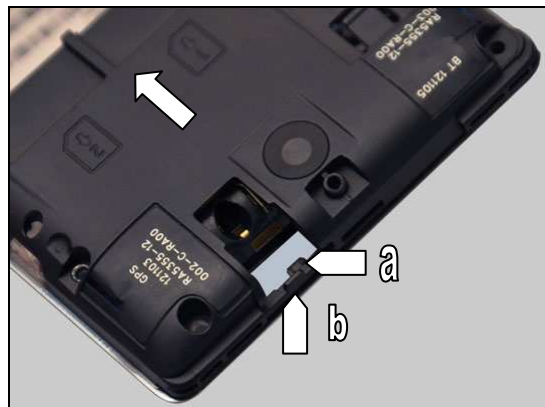
Press along to secure its attachment and position.



Reassembly

5.4 Rear Cover Sub Assembly

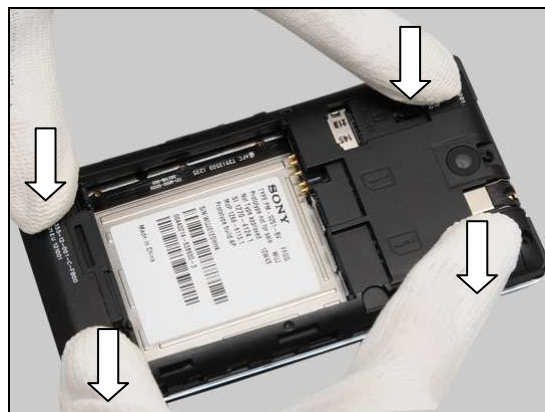
Insert the hook (a) into the hole on Front Cover Sub Assembly and gently pull the Rear Cover Sub Assembly back to secure the hook (b) on it as shown in picture.



Lay down the Rear Cover Sub Assembly.



Press to snap the hooks.



Press to snap this hook.



Reassembly

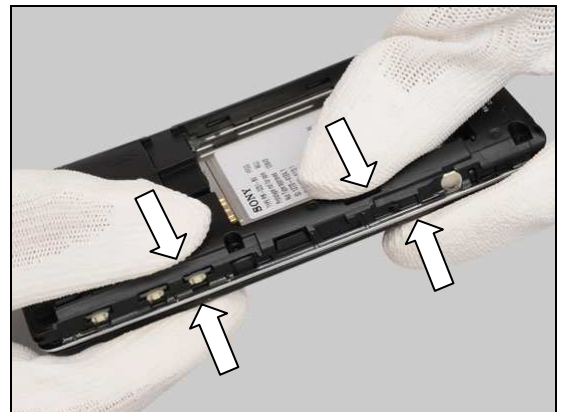
Secure the hooks on the top side.



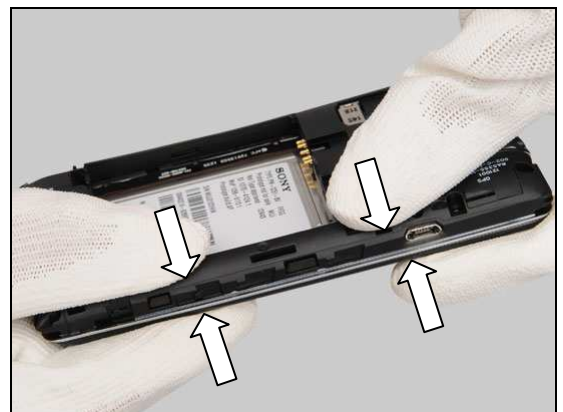
Secure the hooks on the bottom side.



Secure the hooks on this side.



Secure the hooks on the opposite side.



Reassembly

Apply 6.5 - 7 Ncm torque when tightening the three
Screw_1.4mm_2.9mm with Bits (T5).



Apply 10 ± 1 Ncm torque when tightening the four
Screw_1.6mm_4.2mm with Bits (T5).

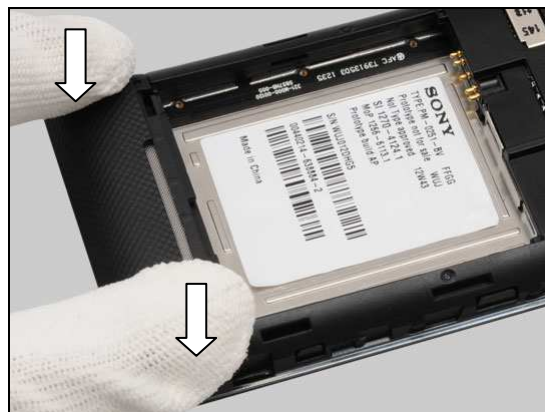


5.5 Battery Lower Cover

Insert the front unit into the cavity of the Battery Lower
Cover as shown in picture.



Press to snap the hooks.



Reassembly

5.6 Battery

Insert the battery into the socket.



Press to secure its position.



5.7 Battery Cover

Place the Battery Cover on the proper position.



Push the Battery Cover to snap the hooks as shown.



6 Revision History

Rev.	Date	Changes / Comments
1	2013-Jan-18	Released
2	2013-Jan-31	Chapter 4.19 updated
3	2013-Feb-06	Page 44.3 Time updated to 50 Seconds
4	2013-March-05	Single SIM added front page
5	2013-March-05	No Change
6	2013-March-05	No Change
7	2014-Feb-26	Add chapter 4.20 for RF Connector Sponge